

## Quizzes

When you load a quiz you will see the date and time the quiz is available and when it closes. In this example, the quiz is called “Canada’s Provinces” and opens Jan 28<sup>th</sup> at 11 am. To begin the quiz, click the “**Attempt quiz now**” button (Figure 1 - Quiz Introduction Screen. If the quiz allows multiple attempts and you have already completed the quiz once, then this button will say “**Reattempt Quiz**” instead.

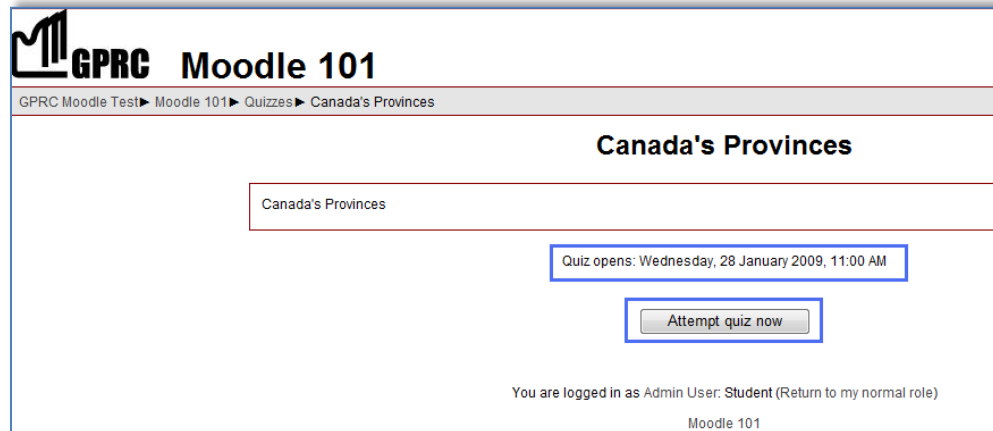
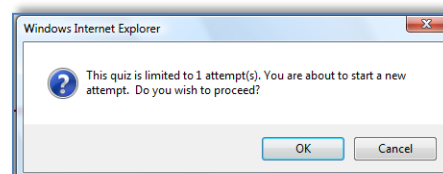


Figure 1 - Quiz Introduction Screen

If the quiz only allows a single attempt, then a window will appear asking if you wish to continue:



Read each question carefully, select the appropriate answer and click Submit to save the question. **If you do not click Submit, the answer will NOT be saved.** When you have completed the quiz, click the Submit all and finish button at the bottom of the screen.