



Fine Arts

Grande Prairie Regional College

Dear Prospective Music Student:

Thank you for your applying to a Music Program at Grande Prairie Regional College.

If you have applied for a place in the Acoustic Music or Bachelor of Music programs, you must perform an audition to gain entry to the programs. For the Acoustic Music, IDD Music, and Bachelor of Music programs, you must take a music theory placement exam, or show us that you have completed MU1000 here at Grande Prairie Regional College or at another institution, or show us that you have successfully completed a grade two music theory exam at a recognized music conservatory, such as the Conservatory Canada.

With this letter, there are a number of attachments:

1. A document that suggests ways of preparing for the music theory placement exam
2. A sample music theory placement exam, that indicates the skills you will need to present to us.
3. A document that explains the audition process here at Grande Prairie Regional College.

When you feel you are prepared for your Audition, please contact our Department Office at (780) 539-2443, and we will arrange the Audition and Music Theory Placement Exam here. If you live outside of the Grande Prairie area, you may alternatively submit an audition recording by mail, and we can make arrangements for you to write the Music Theory Placement Exam at your location, for example in the guidance department of a local high school, or in some other venue. It is possible to write the music theory placement exam on the same day as your audition, or at any time afterward. You are allowed multiple attempts at the theory exam, if you are not successful the first time. When you have successfully completed the audition and the theory exam, you will be given a registration appointment, and an advisor will help you register for the courses you will need for your program.

At any point in this process, please contact the Department Office at 539-2443 if you have any questions.

Welcome to Grande Prairie Regional College!



Fine Arts

Grande Prairie Regional College

Preparing for the Music Theory Placement Exam at Grande Prairie Regional College

To successfully register in MU1510 and MU1550, you must provide evidence that you already understand some basic music theory. The College Calendar requires you to write a music theory placement exam if you cannot provide a credential indicating that you have already passed the grade two music theory exam at any of the well-known conservatories (e.g. Conservatory Canada or Royal Conservatory). If you have a grade two theory certificate or have passed MU1000 (the music rudiments course at GPRC) or an equivalent course, you will be exempt from the exam. Otherwise, you will have to pass a placement exam before your registration is accepted. The exam requires you to show familiarity with:

- note identification in treble and bass clefs
- key signatures and time signatures
- triads (quality and inversions)
- key identification of a melody
- scales and scale degrees
- intervals (size and quality)
- musical terms and symbols (e.g. articulations)
- transposition

Failing the exam will mean that you need to do some remedial work in music theory, and add a year to your program (along with all the extra costs associated with that year). Obviously, it is in your best interest to ensure you will pass the exam. If you need to take the exam because you don't have one of the prerequisites, there are a number of resources to help you prepare for the music theory placement exam. They are identified below, along with some "pros and cons" associated with each method.

1. Private music theory lessons are the best choice.
 - a. Pros: one on one or small class instruction, ability to have questions answered immediately.
 - b. Cons: more expensive than other methods, and it might be challenging finding a teacher, though any qualified piano teacher (piano teachers are the traditional choice for theory lessons) should be able to lead you through the introductory material with ease; try calling the GPRC music conservatory number (539-2444) or G.P. Music (532-8160) for recommendations.
2. You can purchase an introductory music theory textbook, such as *Elementary Rudiments of Music*, by Barbara Wharram, Frederick Harris Music, ISBN 0-88797-004-4; *The Lawless Theory Course: Preliminary Rudiments*, 2nd edition, by James Lawless, Waterloo Music, ISBN 0-88909-232-X or *The Complete Elementary Music Rudiments*, by Mark Sarnecki, Frederick Harris Music, ISBN 0-88797-766-9. GP Music in Grande Prairie has some copies of these sources or can order them for you. [GP Music, 9826 – 100 Ave. GP, AB. Phone (780) 532-8160. E-mail: gpmusic@telusplanet.net.]
 - a. Pros: relatively inexpensive, comprehensive texts that cover everything you will need to know.
 - b. Cons: you may need a resource person to answer questions and clarify material, lack of face-to-face instruction, and you must be self-motivated to get through the material on your own.
3. Use additional resources; there are a number of websites that exist to share materials on music theory; Google for "music theory" to find several of them. One site, <http://www.theoria.com>, has a large reference section that would be a useful starting point. You may want to look at Geoff Whittall's site: <http://fad.gprc.ab.ca/~Geoff/1550/index.html> plus his review page at the same site.
 - a. Pros: free, relatively easy-to-access materials.
 - b. Cons: you will need to access several websites to collect all the information you need, learning is not guided, the quality of websites is uneven and sometimes even questionable, and you need to be self-motivated to find the materials, even before you begin wading through them.

If you have any questions regarding the theory placement exam please contact the Fine Arts Department office at (780) 539-2443 and we will help you contact one of our music instructors.



Fine Arts

Grande Prairie Regional College

Preparing for Music Program Auditions at Grande Prairie Regional College

If you live in the Grande Prairie area, you are expected to perform a live audition. If you do not live near Grande Prairie, you may submit a recorded audition. Recorded auditions may be submitted on cassette tape, CD, DVD, or VHS tape. Please ensure that the sound quality of your audition is the highest possible. Do not use compressed file formats (e.g. MP3) if you submit a CD or DVD. Clearly identify the name of your piece(s) and scales just before performing them on the recording. Clearly identify the name of your piece(s) and scales on the label of your recording. Label your recording (e.g. Jane Smith, Piano audition 2005) before mailing it to:

**Fine Arts Office
Grande Prairie Regional College
10726-106 Ave
Grande Prairie, AB T8V 4C4**

Please contact the Fine Arts Office at (780) 539-2443 if you have any questions about the audition procedure, or if you are unsure about the performance requirements for your instrument. The following list indicates the minimum audition requirements for your instrument.

Brass:

Each candidate should be prepared to perform one piece or étude and a selection of scales.

Guitar:

Each candidate should be prepared to perform one piece or étude and a selection of scales.

Percussion:

Your audition should include material from at least two of the three primary areas of percussion study: mallets (xylophone, vibraphone, or marimba), snare drum, or timpani.

Mallets: Each candidate should be prepared to perform one piece or étude and a selection of major scales.

Snare Drum: Each candidate should be prepared to perform one piece or étude and a selection of rudiments (e.g. long roll, 5 stroke roll, 9 stroke roll, flam, paradiddle, ruff)

Timpani: Each candidate should be prepared to perform one piece.

Contact Geoff Whittall at 539-2823 or gwhittall@gprc.ab.ca for suggestions about repertoire.

Piano:

You should be playing at a grade eight level to gain entry into the Bachelor of Music or Acoustic Music programs. Your audition should consist of a piece or étude, along with a mix of technique (scales, chords, arpeggios) consistent with grade eight piano.

Continued...



Fine Arts

Grande Prairie Regional College

Woodwinds:

Each candidate should be prepared to perform one piece or étude and a selection of scales.

Voice:

Applicants to the Music - Acoustic program should prepare two art songs selections in English. You must provide your own accompanist (see note regarding accompanists below).

Candidates for the Bachelor of Music program should prepare two pieces – one selection should be an art song in English and the second piece must be in a language other than English (French, Italian, or German). The second piece may be a German Lied (Schubert, Schumann, Brahms), French Melodie (Faure, Duparc, etc.), or Italian Aria Antiche (e.g. from the Twenty-six Italian Songs and Arias collection).

Accompanists

Applicants are required to provide, and hire if necessary, their own accompanist for the audition. Your accompanist must be able to successfully perform the accompaniment part at the required tempo. If you do not know of a pianist in Grande Prairie who can play for you then please contact our Fine Arts Department office for a list of conservatory piano teachers or students who may be able to help you.

GPRC Sample Music Theory Placement Exam

2006-2007

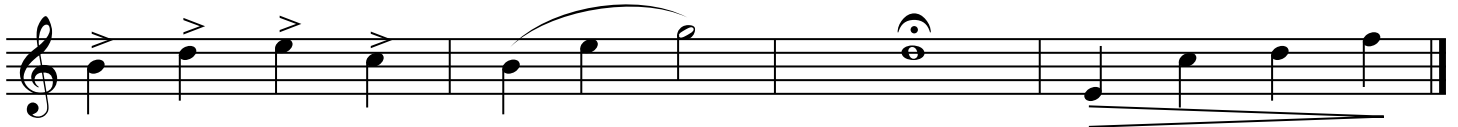
Total points: _____ / 92

Name: _____

1. Define the following terms and identify the symbols connected to the notes. /8

largo _____ accelerando _____

legato _____ presto _____



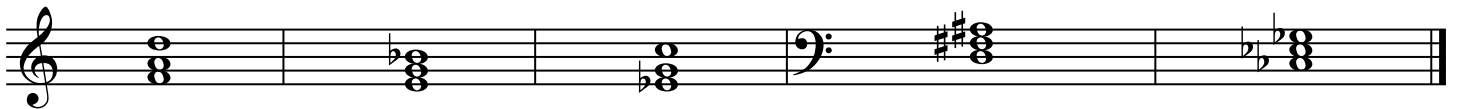
2. Identify the following notes. Watch the clef change. /8



3. Identify the following intervals. /5



4. Identify the following triad types (major, minor, etc.) and their position or inversion (root, 1st, etc.). Watch the clef change. /10



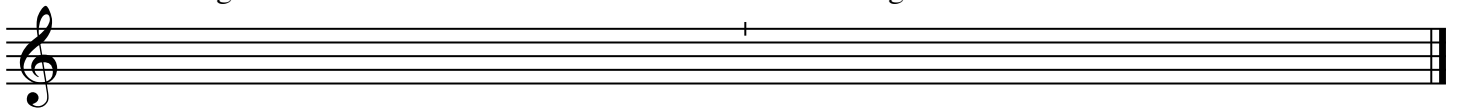
Type: _____

Position: _____

5. a) Write the A Minor melodic scale using the correct key signature and accidentals. One octave, ascending and descending form, using quarter notes. /17

ascending

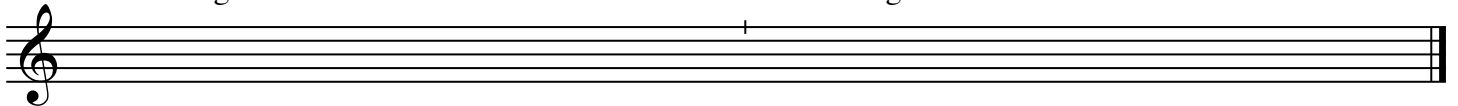
descending



b) Write the C# major scale using the correct key signature. One octave, ascending and descending form, using quarter notes. /17

ascending

descending



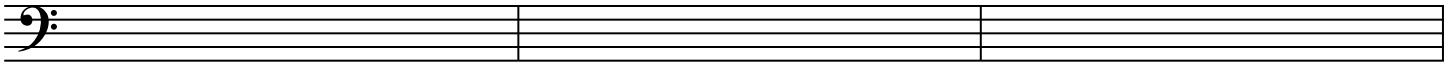
GPRC Sample Music Theory Placement Exam Page 2

6. Write the following notes in each measure using accidentals instead of a key signature. Your choice of note length. /6

Subdominant of A Major

Mediant of F Minor

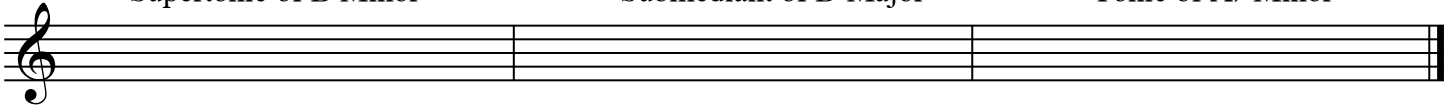
Leading tone of G Major



Supertonic of B Minor

Submediant of D Major

Tonic of A \flat Minor



7. Write out the following key signatures. Watch the clef change. /4

E \flat Major

E Minor

G Major

D Minor



8. Identify the key and time signature of the following musical sample. Then, transpose the melody up a major second. Provide the correct key signature and time signature on the staff of the transposed melody. /17



Key: _____ Time Signature: _____

